

Classic+ Series User Manual
NL Folding Series Wireless Adjustable Base
Installation & Operation



Customer Service: 904-902-4229

Table of Contents

Safety & Warranty Warnings 01
Parts List 02
NU700 Electronics Quick Reference Guide 03
NU700 Remote Control Instructions 05
Installation Guide 06
Setting Programmable Positions and Pairing Remote 06
Synchronizing Two Bases 07
NL400F Electronics Quick Reference Guide 08
Headboard Bracket Installation Guide 09
Troubleshooting 10
NL400F Remote Control Instructions 12
Installation Guide 13
NL400F Remote Control Instructions 14
Setting Programmable Positions and Pairing Remote 15
Emergency Battery Backup 16
Synchronizing Two Bases 17
Headboard Bracket Installation Guide 18
Troubleshooting 19

Customer Service: 904-902-4229

Safety & Warranty Warnings

READ THE FOLLOWING INFORMATION CAREFULLY BEFORE USING THIS PRODUCT. If unable to understand warnings, cautions, and/or instructions, contact the dealer or technical personnel if applicable, before attempting to use the equipment. Otherwise, injury or damage may result.

SAFETY WARNINGS :
Do not use bed extension.
Do not use bed near open flames.
Do not use bed near electrical equipment other than the rated electrical system (residential wiring).
When using heat or radiant type warming equipment, cover and secure openings or wiring properly to ensure that falling items do not become energized or damaged during normal operation of the bed.
When using heat or radiant type warming equipment, cover and secure openings or wiring properly to ensure that falling items do not become energized or damaged during normal operation of the bed.
Use caution when being heated or around the bed to ensure no falling items, in case of falling, stand in the clear area of the floor and unplug the bed immediately. Clean or spill and allow the area around bed to dry thoroughly before using the electric control again. Do not use or stand on the bed while operating the bed.
This appliance is not intended for use by persons (including children) with reduced physical, sensory or mental capabilities, or lack of experience and knowledge, unless they have been given proper supervision or instructions concerning use of the appliance by a person responsible for their safety.
Do not allow children or individuals with disabilities to operate the bed without adult supervision.
Do not allow any person or pet under the bed or any item.
During bed operation, make sure beds is positioned within the confines of the bed. Do not place extensions over the sides of the bed while operating bed function.
HOSPITALITY DISCLAIMER: This power foundation is designed for residential use only. It is not approved for hospital use and does not comply with hospital standards.
WEIGHT LIMITS: This product is not used to support weights in excess of 750 pounds inclusive of the mattress and bedding. The bed will automatically support the weight, provided it is evenly distributed across the foundation. The power foundation is not designed to support or lift the mattress or the bed or any other object. Exceeding the weight maximum could damage the bed and/or cause injury and void the warranty.

WARRANTY WARNINGS: Do not open or tamper with control box, motors, or remove both the suspension of heavy components. The warranty will be void if the internal wiring of these components is tampered with.

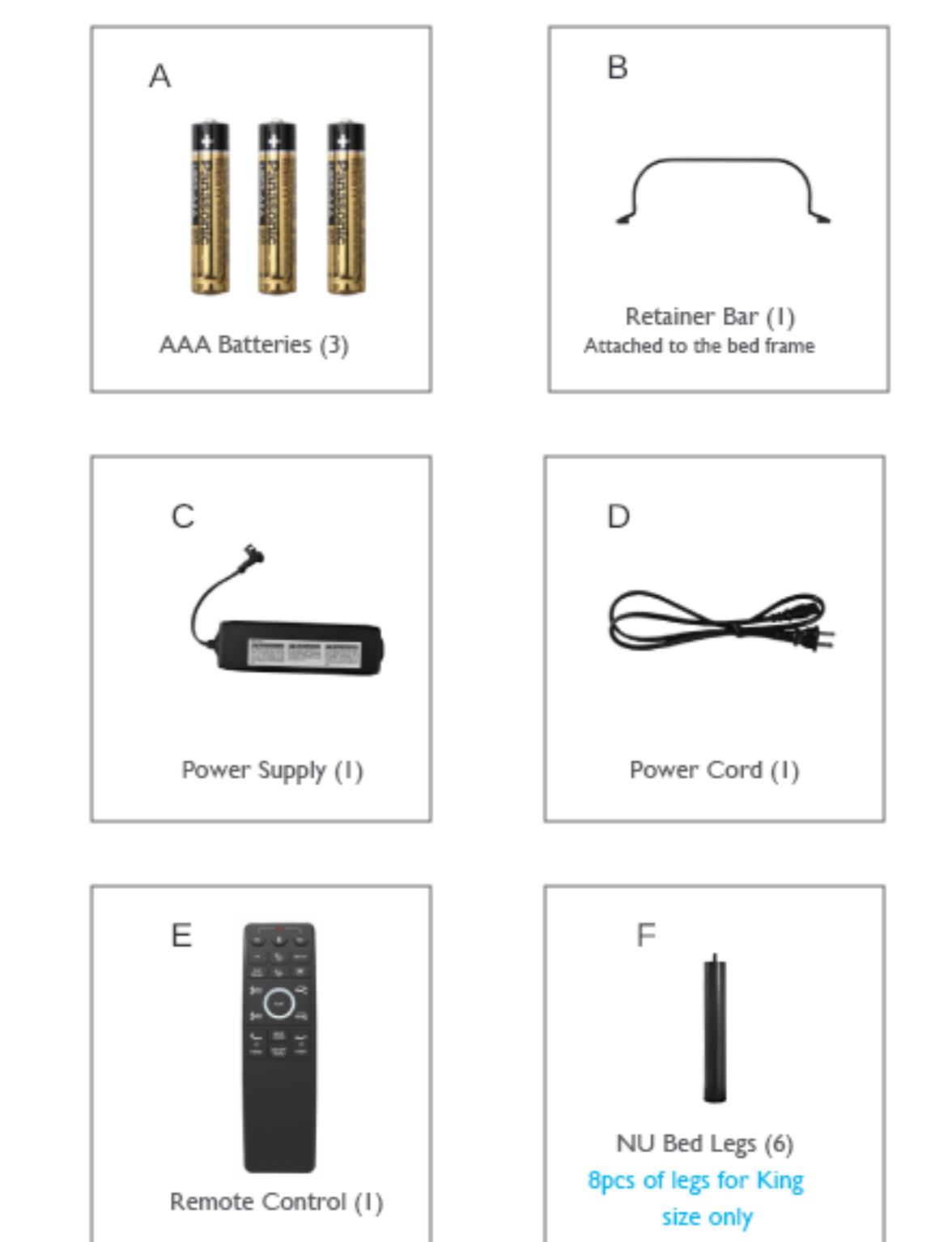
RADIO FREQUENCY 2.4 GHz
FCC COMPLIANCE
This device complies with Part 15 of the FCC rules. Operation is subject to the following two conditions: (1) This device may not cause harmful interference, and (2) this device must accept any interference that may cause undesired operation.

To comply with the FCC RF exposure requirements, no change to the antenna or device is permitted. Any change to the antenna or the device could result in the device exceeding the RF exposure requirements and void your 1 year warranty.

Customer Service: 904-902-4229

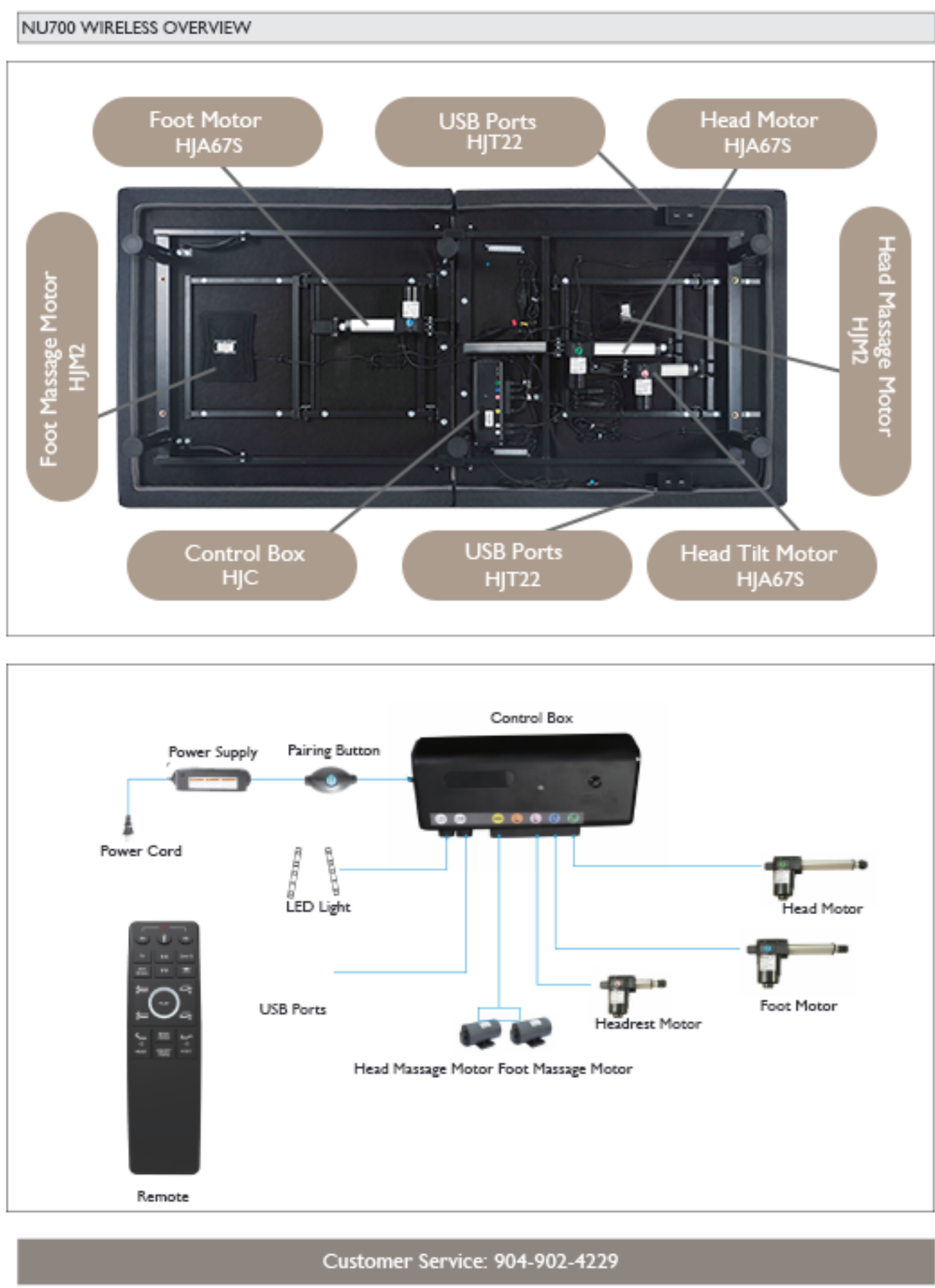
Parts List

All electronics and components that need to be installed are located in boxes under the foundation or attached to the frame. Before discarding the packing materials, ensure that all the parts are accounted for.



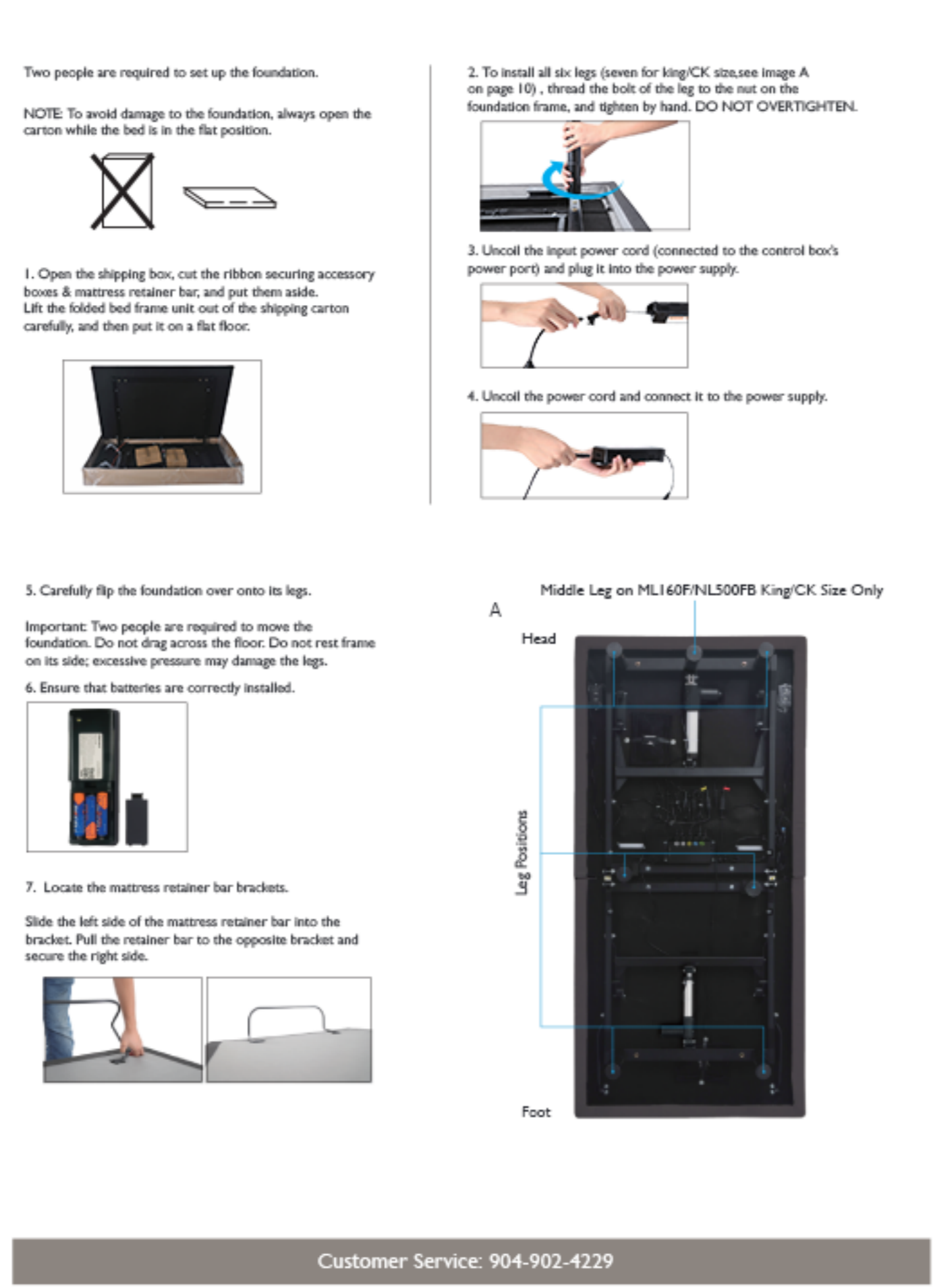
Customer Service: 904-902-4229

NU700 Electronics Quick Reference Guide



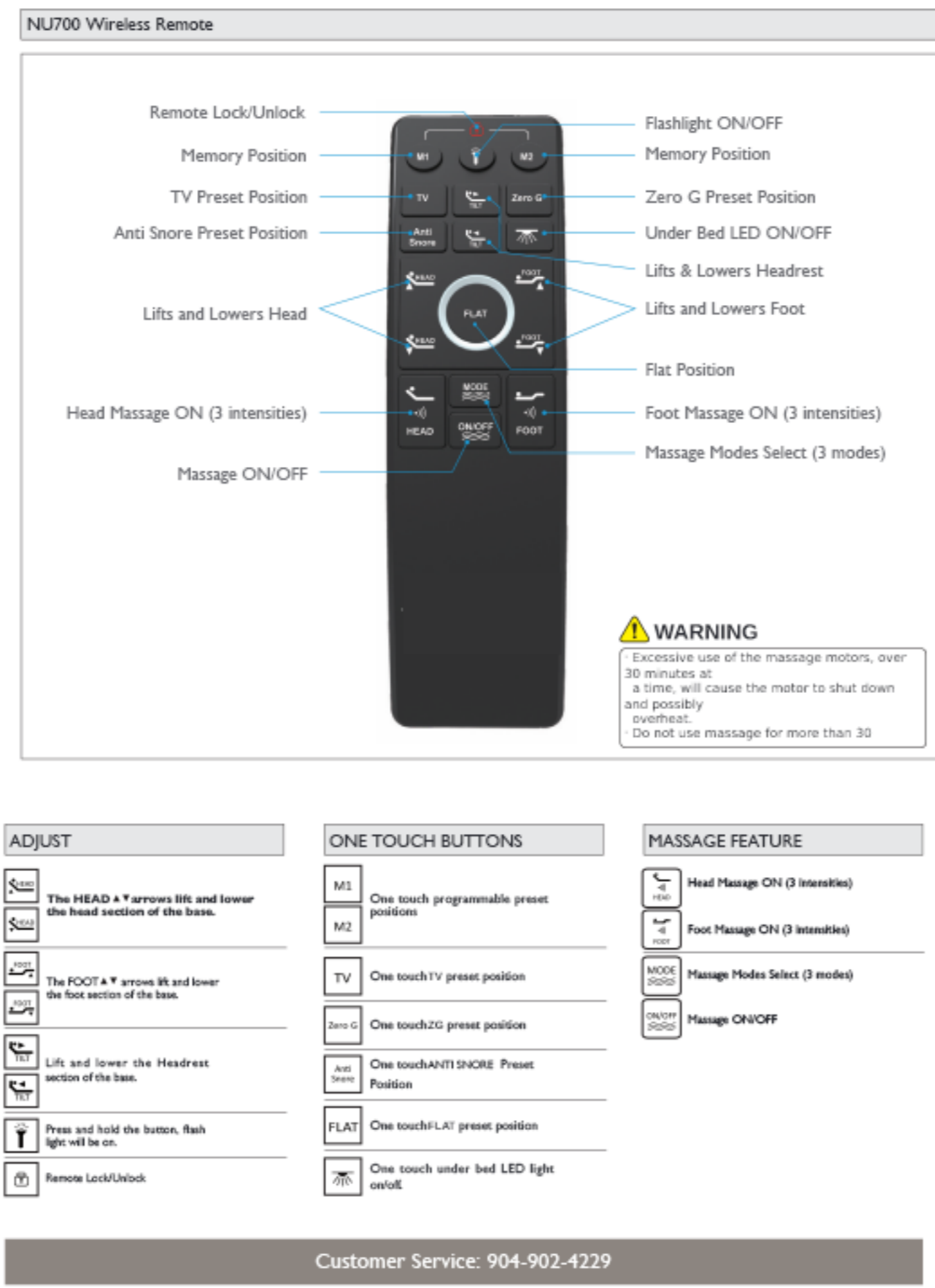
Customer Service: 904-902-4229

Installation Guide



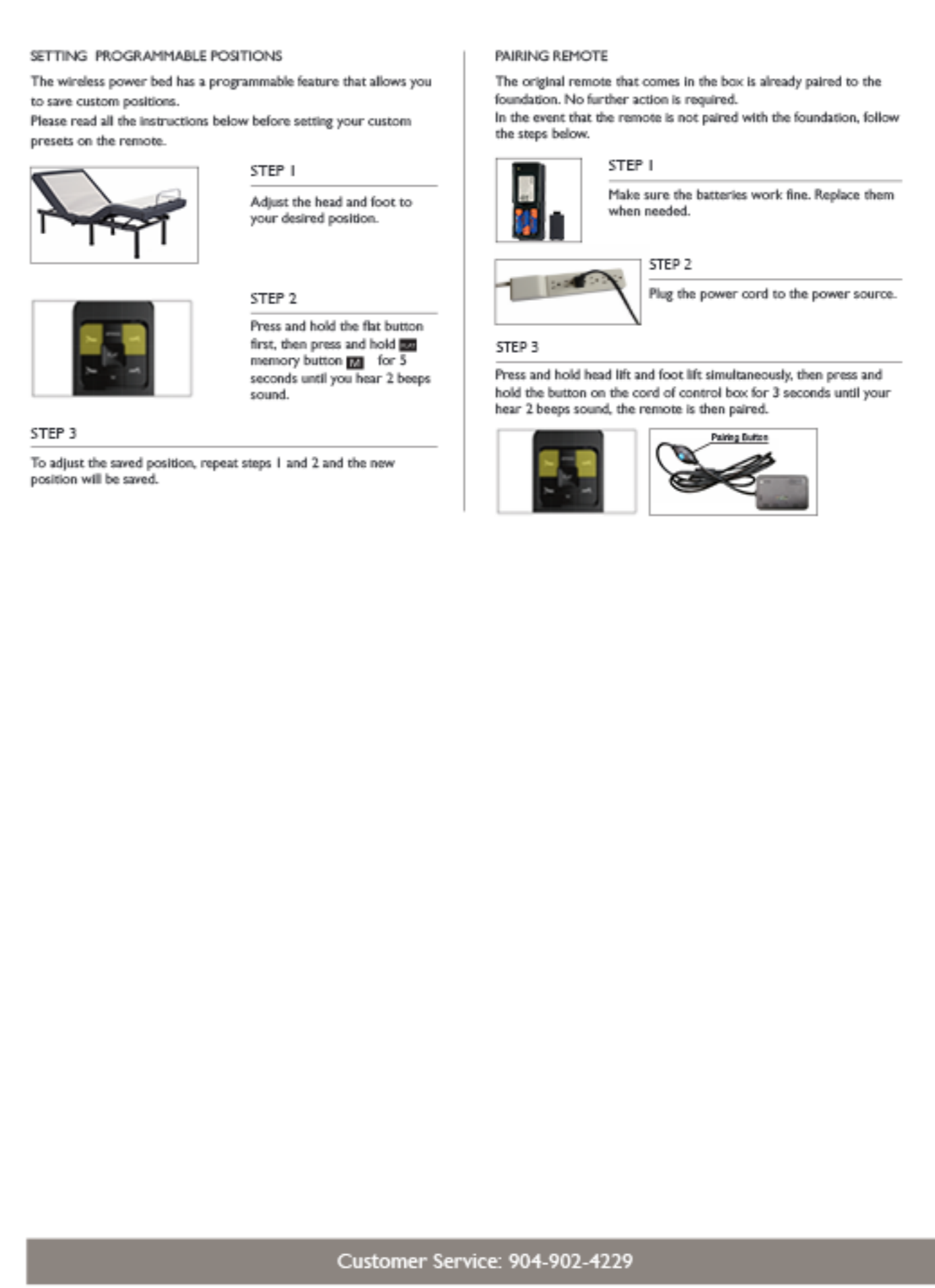
Customer Service: 904-902-4229

NU700 Remote Control Instructions



Customer Service: 904-902-4229

Setting Programmable Positions and Pairing Remote



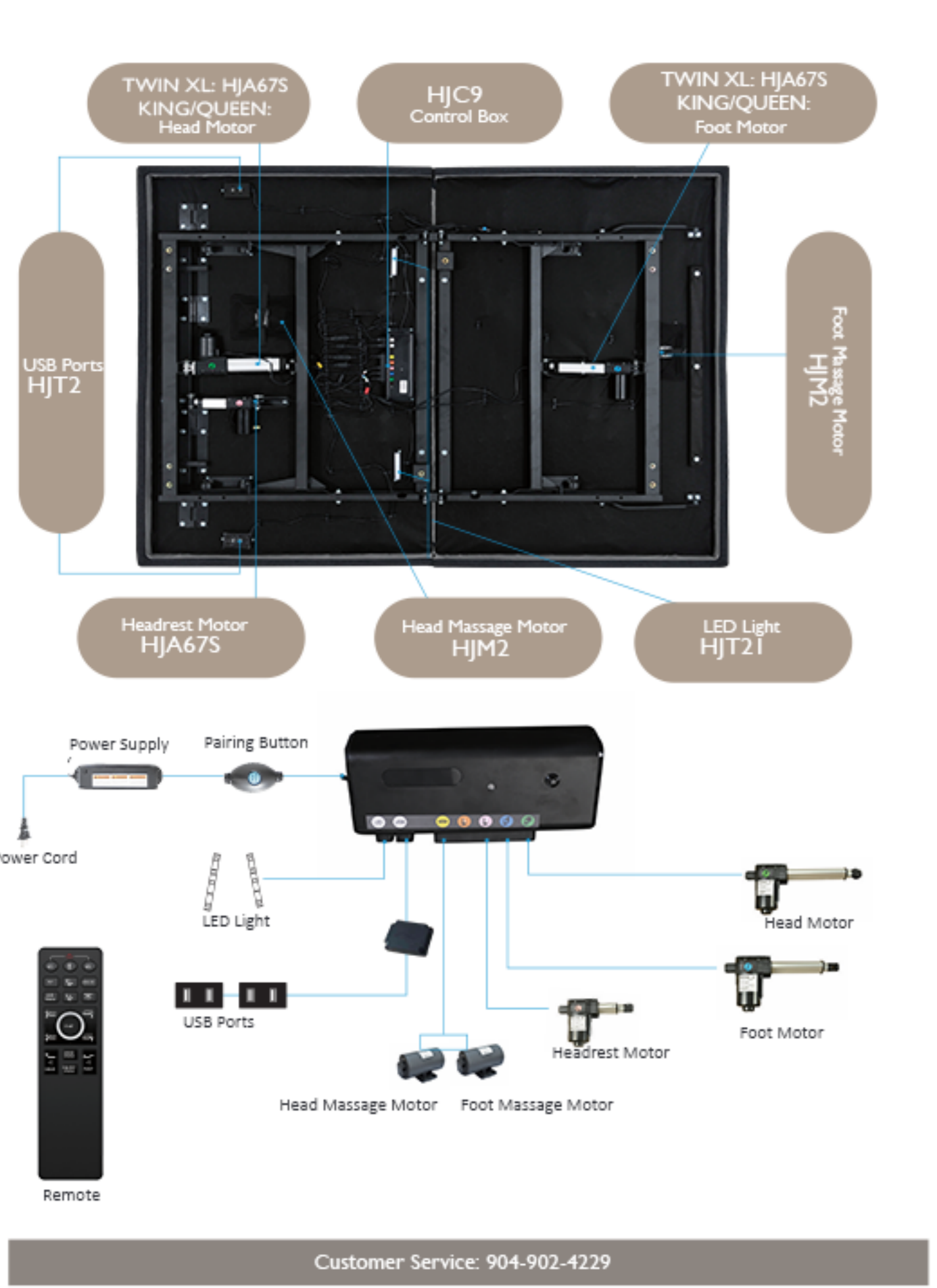
Customer Service: 904-902-4229

Synchronizing Two Bases



Customer Service: 904-902-4229

NL400F Electronics Quick Reference Guide



Customer Service: 904-902-4229

Headboard Bracket Installation Guide



Customer Service: 904-902-4229

Troubleshooting

SYMPTOMS	SOLUTIONS
Remote control functions and appears to be operable, but will not extend bed.	Verify that the power cord is plugged into a working grounded electrical outlet. Test the outlet by plugging in another working appliance.
No response of the power foundation will activate.	Program the remote control (see the Setting Programmable Positions and Pairing Remote section of this manual for programming procedure). Unplug the power cord, wait 30 seconds and plug back to reset electronic components. The surge protector device or the electrical outlet may be defective. Test the outlet by plugging in another working appliance. Verify that the connection to the remote receiver is securely attached to the control box.
Wireless remote will not function.	Replace the batteries in the wireless remote. Bed mechanism may be obstructed. Remove bed and check for obstruction. Remove obstruction. Head section may be too close to the wall.
Head or foot section will extend, but will not return to the horizontal (flat) position.	Headboard may be too close to the edge of the mattress. Verify that there is enough distance between the headboard brackets and mattress. Adjust if required.

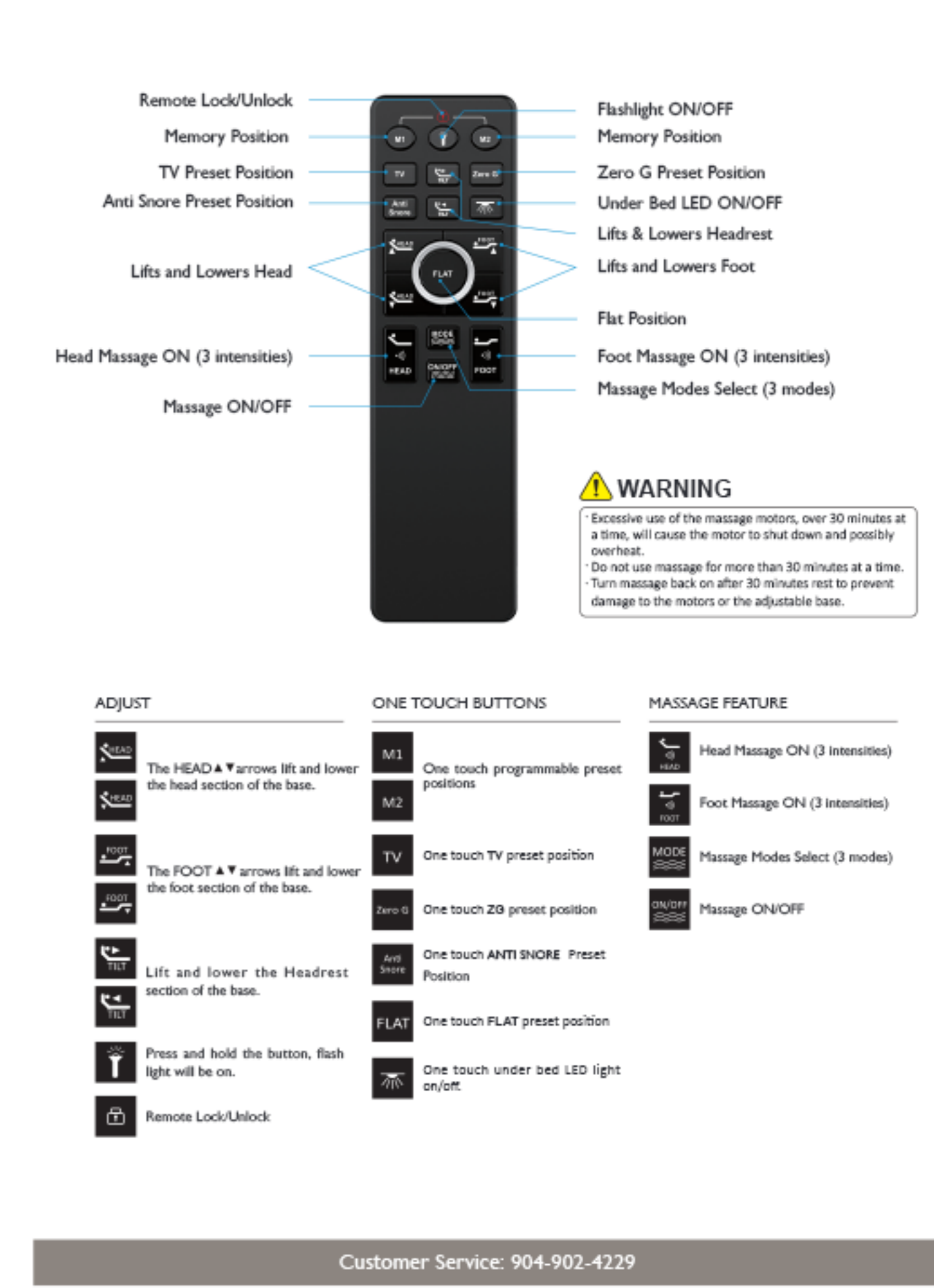
Customer Service: 904-902-4229

Troubleshooting

SYMPTOMS	SOLUTIONS
Head & Foot (if function) has motion interference during operation.	Check batteries in wireless remote control, replace with two (2) new AAA batteries if necessary. Make sure that you are following the duty cycle of the remote (do not operate more than 10 minutes over a 10-minute period or approximately 10% duty cycle). Check the IR battery frequency and accuracy. Wireless remote control may be experiencing common Radio Frequency Interference from other radio transmitting devices that operate on the same frequency band. Try pressing appropriate button again. See FCC Compliance Statement on page 1 of this guide. Verify that the IR battery frequency and accuracy. If the bed is located on hard surface flooring, place carpet pieces or rubber paws (not included) under each leg. Using the electronic remote control, adjust the head, foot and each section a short distance to re-align the IR receiver with the bed support platform.
Extension message motor noise.	Verify that your Power Foundation is not positioned against a wall, refrigerator, or other object that may cause the vibration or noise. If the Foundation is installed over a bed frame, verify that the message motors are not causing the bed frame (or bed frame components) to vibrate. Verify that the headboard attachment hardware is properly aligned (if used). This is normal. The IR motor emits "click" when they are engaged. No action is required.
Massage motor overheat or stops.	If the vibration motor overheat, the thermal protection will turn the motor off for 30 minutes. Turn the massage motor on. If it does not come on, turn it off and report the vibration to customer service.

Customer Service: 904-902-4229

NL400F Remote Control Instructions



Customer Service: 904-902-4229

Installation Guide



Customer Service: 904-902-4229

NL400F Remote Control Instructions



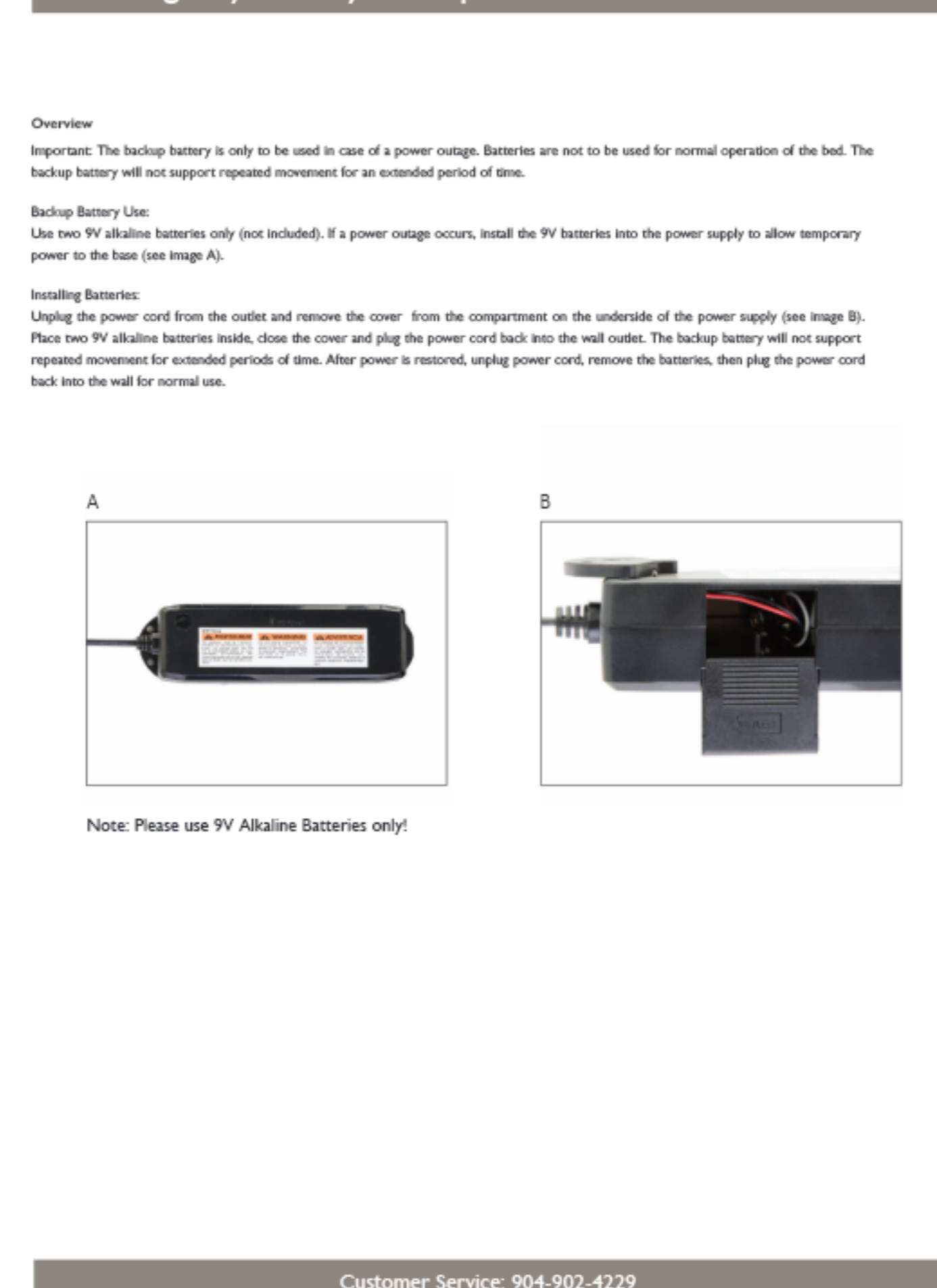
Customer Service: 904-902-4229

Setting Programmable Positions and Pairing Remote



Customer Service: 904-902-4229

Emergency Battery Backup



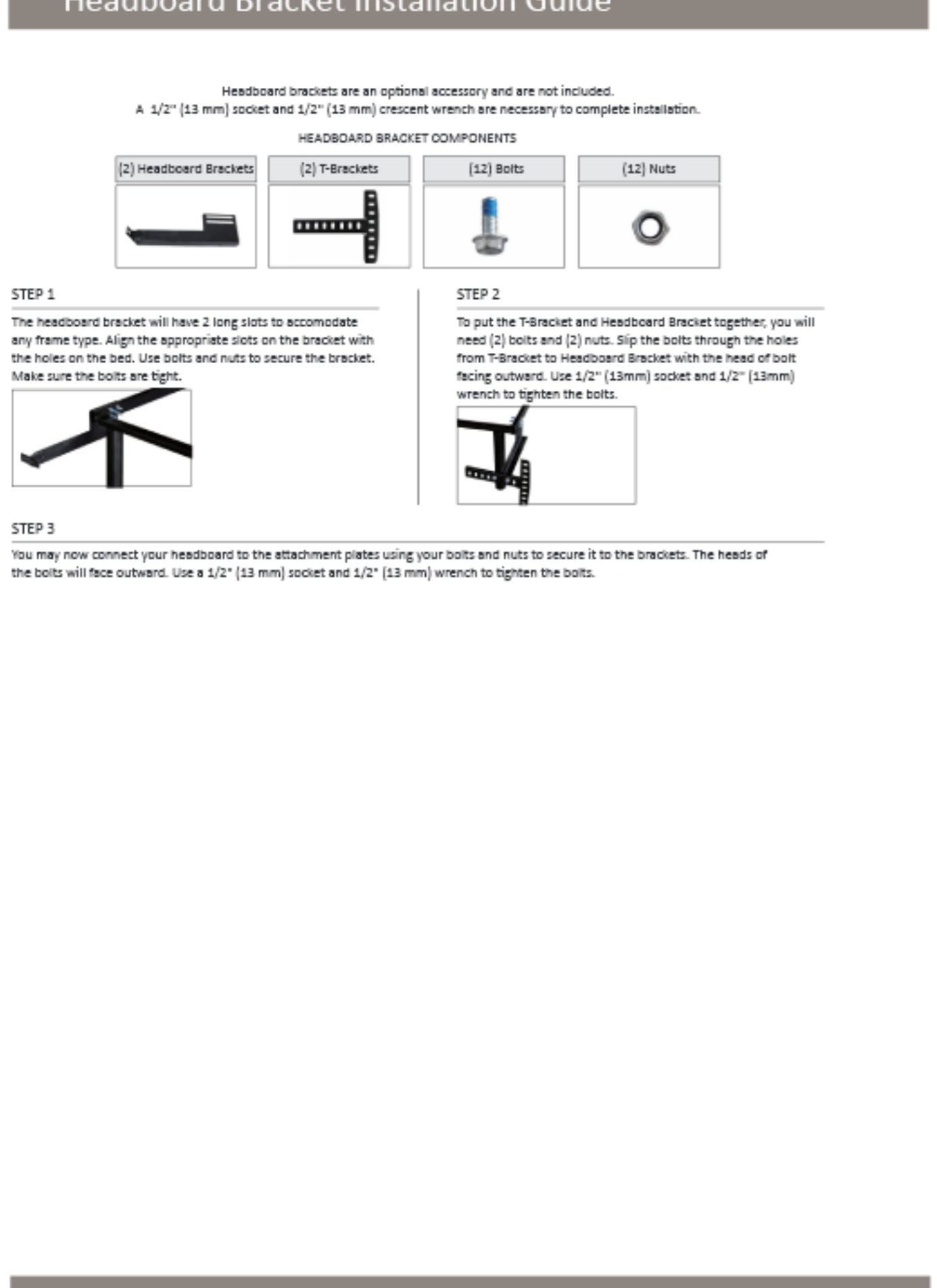
Customer Service: 904-902-4229

Synchronizing Two Bases



Customer Service: 904-902-4229

Headboard Bracket Installation Guide



Customer Service: 904-902-4229

Troubleshooting

SYMPTOMS	SOLUTIONS
Remote control functions and appears to be operable, but will not extend bed.	Verify that the power cord is plugged into a working grounded electrical outlet. Test the outlet by plugging in another working appliance.
No response of the power foundation will activate.	Program the remote control (see the Setting Programmable Positions and Pairing Remote section of this manual for programming procedure). Unplug the power cord, wait 30 seconds and plug back to reset electronic components. The surge protector device or the electrical outlet may be defective. Test the outlet by plugging in another working appliance. Verify that the connection to the remote receiver is securely attached to the control box.
Wireless remote will not function.	Replace the batteries in the wireless remote. Bed mechanism may be obstructed. Remove bed and check for obstruction. Remove obstruction. Head section may be too close to the wall.
Head or foot section will extend, but will not return to the horizontal (flat) position.	Headboard may be too close to the edge of the mattress. Verify that there is enough distance between the headboard brackets and mattress. Adjust if required.
Extension message motor noise.	Check batteries in wireless remote control, replace with two (2) new AAA batteries if necessary. Make sure that you are following the duty cycle of the remote (do not operate more than 10 minutes over a 10-minute period, or approximately 10% duty cycle). Check the IR battery frequency and accuracy. Wireless remote control may be experiencing common Radio Frequency Interference from other radio transmitting devices that operate on the same frequency band. Try pressing appropriate button again. See FCC Compliance Statement on page 1 of this guide. Verify that the IR battery frequency and accuracy. If the bed is located on hard surface flooring, place carpet pieces or rubber paws (not included) under each leg. Using the electronic remote control, adjust the head, foot and each section a short distance to re-align the IR receiver with the bed support platform.
Massage motor overheat or stops.	If the vibration motor overheat, the thermal protection will turn the motor off for 30 minutes. Turn the massage motor on. If it does not come on, turn it off and report the vibration to customer service.

Customer Service: 904-902-4229

Classic+ Series User Manual